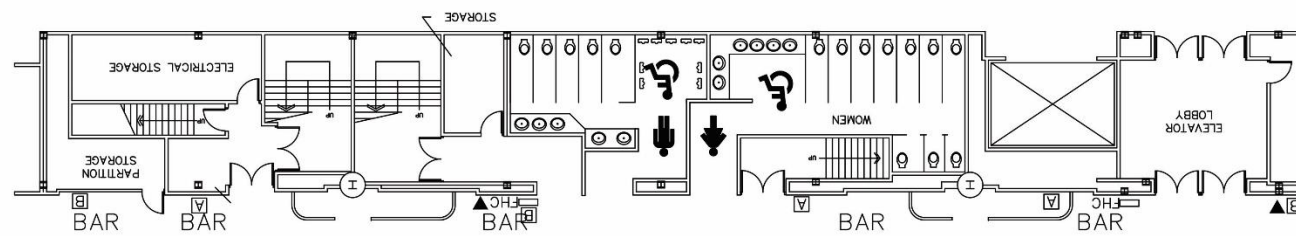
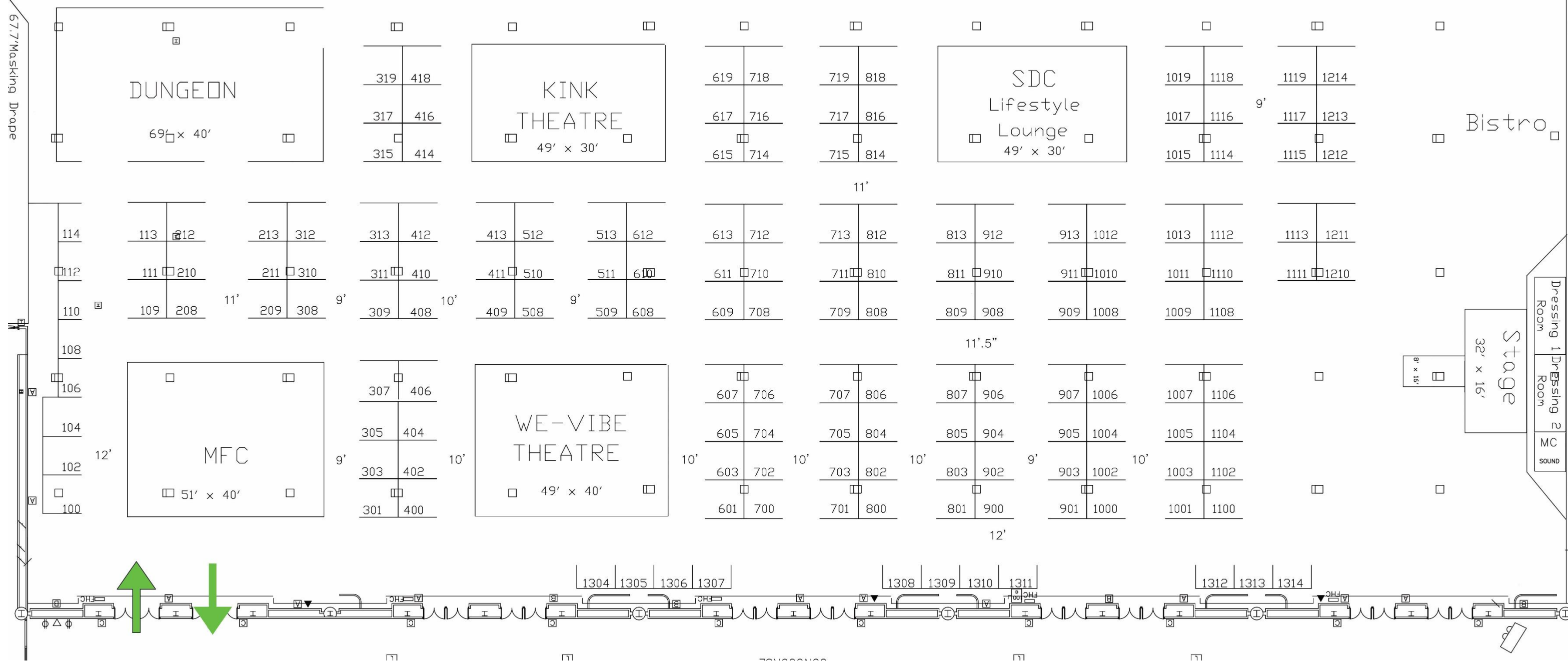
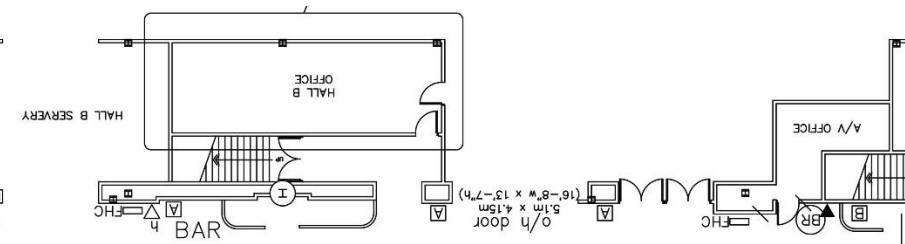


VCEC East Hall B/C

10'.6"



18'.5"



67.7' Masking Drape

DUNGEON

69' x 40'

KINK THEATRE

49' x 30'

SDC Lifestyle Lounge

49' x 30'

WE-VIBE THEATRE

49' x 40'

MFC

51' x 40'

Stage

32' x 16'

Dressing Room 1, Dressing Room 2, MC, SOUND



1304 | 1305 | 1306 | 1307

1308 | 1309 | 1310 | 1311

1312 | 1313 | 1314